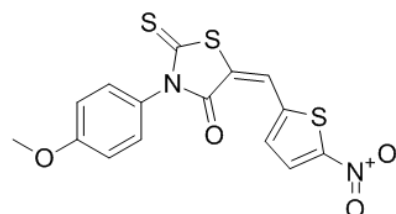


Product Name : CCF642
Cat. No. : PC-42153
CAS No. : 346640-08-2
Molecular Formula : C₁₅H₁₀N₂O₄S₃
Molecular Weight : 378.4459
Target : Protein Disulfide Isomerase (PDI)
Solubility : DMSO: ≥ 30 mg/mL



Biological Activity

CCF642 (CCF 642) is a novel covalent **protein disulfide isomerase (PDI)** inhibitor with IC₅₀ of 2.9 μM, shows antimyeloma activity.

CCF642 inhibits PDI reductase activity about 100-fold more potently than PACMA 31 and LOC14.

CCF642 shows cytotoxicity against MM cells with a submicromolar IC₅₀, causes acute ER stress in multiple myeloma cells accompanied by apoptosis-inducing calcium release.

CCF642 displays potent efficacy and prolongs the lifespan in an aggressive syngeneic mouse model of multiple myeloma.

References

Vatolin S, et al. **Cancer Res.** 2016 Jun 1;76(11):3340-50.

Caution: Product has not been fully validated for medical applications. Lab Use Only!

E-mail: tech@probechem.com